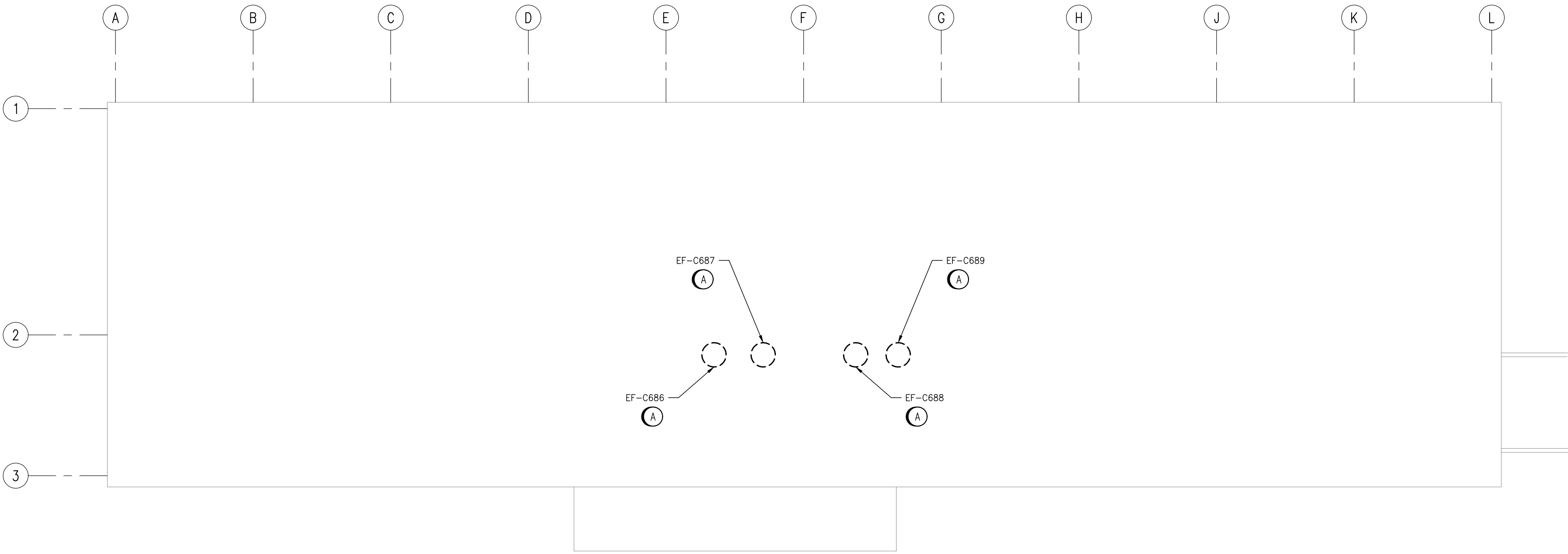


GENERAL NOTES:

1. ALL EQUIPMENT MARKED FOR DEMOLITION INCLUDES THE COMPLETE REMOVAL BACK TO THE SOURCE PANEL OF ANY EXISTING POWER AND CONTROLS SYSTEMS ASSOCIATED WITH THAT EQUIPMENT.

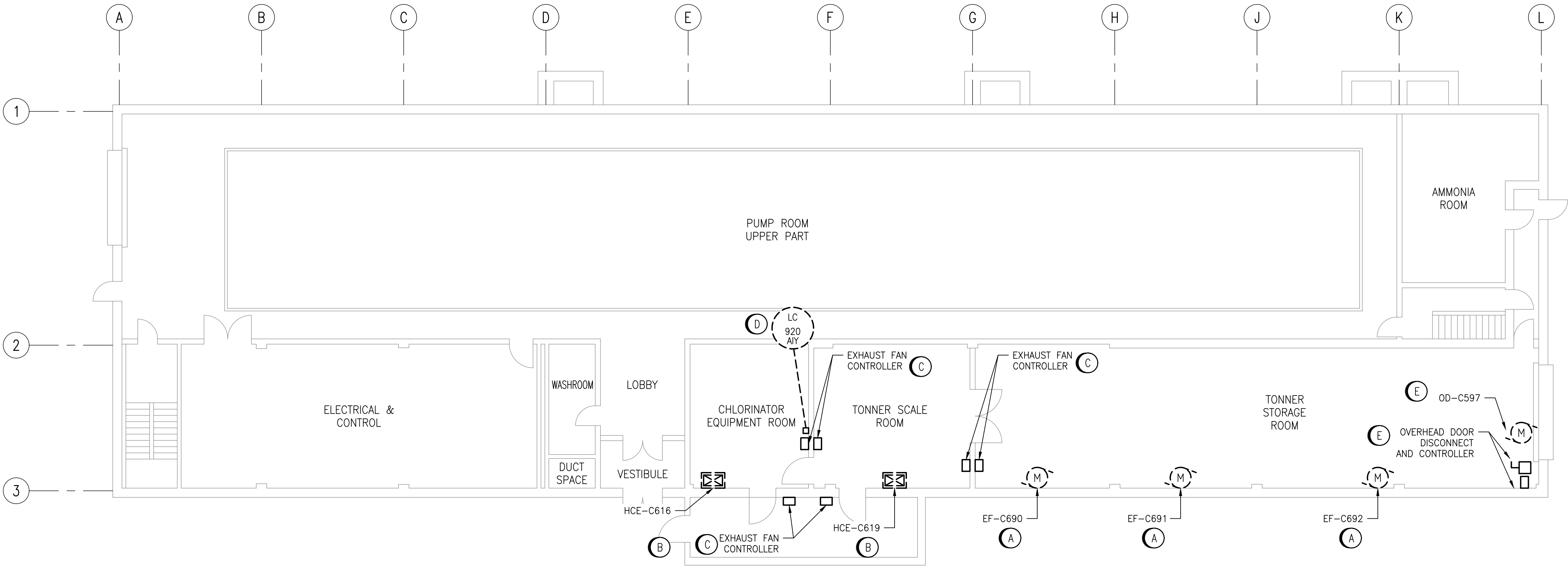
DEMOLITION NOTES:

- A** REMOVE EXISTING EXHAUST FAN UNIT AND ALL EQUIPMENT, CONDUIT AND CABLING BACK TO THE SOURCE PANEL. CONTRACTOR IS TO DEMOLISH ANY MOTORIZED DAMPERS AND CONTROL WIRING ASSOCIATED WITH THE FAN UNIT BEING REMOVED.
- B** REMOVED EXISTING ELECTRIC HEATERS. CONTRACTOR IS TO DEMOLISH DUCT HEATER AND ALL CONDUIT AND CABLING ASSOCIATED WITH POWER AND CONTROLS BACK TO THE SOURCE PANEL.
- C** REMOVE EXISTING EXHAUST FAN CONTROL PANELS AND ALL ASSOCIATED CONDUIT AND CABLING BACK TO THE SOURCE PANEL.
- D** REMOVE EXISTING CHLORINE GAS DETECTION CONTROLLER LC-920-AIY AND ASSOCIATED CHLORINE GENERATOR AND SENSORS. EXISTING CHLORINE HORNS AND STROBES ARE BEING REUSED AND REWIRED TO NEW CONTROLLERS. CONTRACTOR TO RETAIN EXISTING WIRING/ CONDUIT TO HORNS AND STROBES WHERE POSSIBLE AND MODIFY/ADD ACCORDINGLY. EXISTING GAS DETECTION CONTROLLER SHALL REMAIN IN OPERATION UNTIL NEW SYSTEM IS INSTALLED, COMMISSIONED AND PUT IN SERVICE. LOCATION OF NEW CONTROLLER MAY CHANGE IN ORDER TO FACILITATE THIS. CONTRACTOR TO ENSURE CONSTRUCTION SCHEDULE FACILITATES THIS MANDATE.
- E** REMOVE EXISTING OVERHEAD DOOR OD-C597 LOCATED IN THE TONNER STORAGE ROOM ALONG WITH EXISTING DISCONNECT SWITCH AND CONTROLLER. EXISTING CABLING AND CONDUIT FROM SOURCE PANEL TO DISCONNECT TO BE TO RETAINED TO CONNECT TO NEW OVERHEAD DOOR EQUIPMENT. REMOVE EXISTING CABLING AND CONDUIT FROM DISCONNECT SWITCH CONTROLLER TO MOTOR UNIT, AND REPLACE WITH NEW EQUIPMENT.



ROOF PLAN - DEMOLITION

SCALE: 1:100



MAIN FLOOR PLAN - DEMOLITION

SCALE: 1:100



REVISIONS			
NO.	REVISIONS	DATE	DESIGN CHECK
00	ISSUED FOR TENDER AND CONSTRUCTION	2025/04/30	VE VE

<b>AtkinsRéalis</b> 148 Nature Park Way, Winnipeg, Manitoba Canada R3P 0X7 204-786-8080	
DESIGNED BY: B. WILKS	CHECKED BY: V. ELIMBAN
DRAWN BY: B. WILKS	APPROVED BY: V. ELIMBAN
SCALE: 1:100	ISSUED FOR CONSTRUCTION BY: M. SKINNER
DATE: 2023/07/24	DATE: 2025/04/30
CONSULTANT NO.:	

ENGINEER'S SEAL
-----------------

<b>THE CITY OF WINNIPEG</b> WATER AND WASTE DEPARTMENT	
MACLEAN PUMPING STATION CHLORINE SYSTEM UPGRADES ELECTRICAL EQUIPMENT PLAN DEMOLITION	
CITY DRAWING NUMBER 1-0630M-E0072	SHEET 001
REV. 00	SIZE A1

DRAWING NUMBER	REFERENCE DRAWINGS
----------------	--------------------